

Summer School on Medical Geochemistry

Effects on Health of Geological Material Exposure. THE GEOCHEMICAL APPROACH

October 4 - 8, 2010 Capo Granitola (Trapani)

INVITED SPEAKERS

Prof. Robert H. Byrne - Distinguished Research Professor - USF College of Marine Science - USA

Prof. Yigal Erel - Head of the Fredy and Nadine Herrmann Institute of Earth Sciences - The Hebrew University of Jerusalem - ISRAEL

Dr. Thomas Darrah - PhD, Researcher - Biomineral Research Laboratory - Environmental Earth and Ocean Sciences - University of Massachusetts - USA

Prof. Robyn Hannigan - Professor and Chair - Environmental Earth and Ocean Sciences - University of Massachusetts USA.

Prof. Luigi Marini - Professor of Geochemistry DipTeRis - Università di Genova - ITALY

Prof. Aldo Morrone - Director of Istituto Nazionale per la promozione della salute delle popolazioni migranti e per il contrasto delle malattie della Povertà - Roma - ITALY

Prof. Mariano Valenza - Professor of Geochemistry - Dipartimento CFTA Università di Palermo ITALY

Prof. Pierpaolo Zuddas - Professor of Geochemistry - Département Sciences de la Terre - Université Claude Bernard Lyon 1 - FRANCE



Consiglio Nazionale delle Ricerche
Istituto per l'Ambiente Marino Costiero
UOS di Capo Granitola

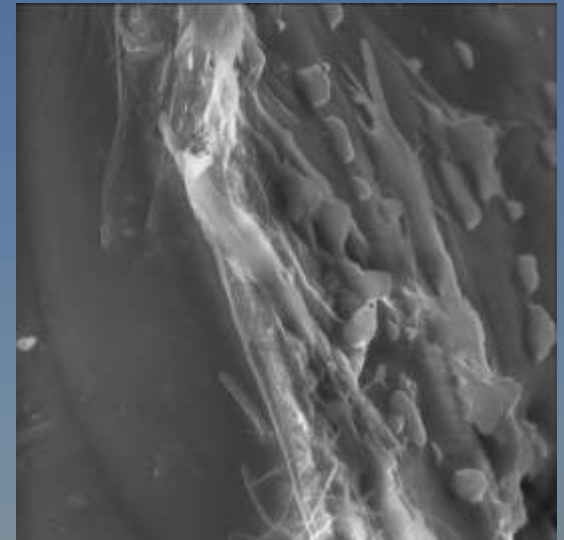


Università degli Studi di Palermo
Dipartimento Chimica e Fisica
della Terra

SCOPE AND PURPOSES

The scope of the summer school is to share the most recent information on the effects of exposure to materials of geological origin on the humans including the impact of atmospheric particulates of volcanic and sedimentary origin, natural waters and volcanic gases, both according to experimental studies and to modelling approach. A case of study related to particular diseases in people living in less advanced worldwide areas will be also presented.

The summer school will explore also the state of art in terms of analytical capabilities to investigate trace element distributions and isotopic rations in human tissues and fluids in order to suggest new geochemical proxies able to evaluate origin of materials that interact with human body.



OBJECTIVES

At the completion of this Workshop, the attendees will be able to:

Know and gain information on the capability of human body fluids to interact with external materials of different geological origin and complex trace elements. Geological sources of potentially dangerous materials and their effects according to a selected case study.

Know and gain information about processes occurring in the human body in the so-called reactive interfaces, gastro-intestinal apparatus, lungs and skin and their description in terms of a geochemical point of view.

Thermo
ELECTRON CORPORATION

The main effects of exposure to natural and anthropogenic material sources, the impact of trace elements after dissolution of delivered materials and their toxicity for human and environmental health.

Have an wide scenario of the state of art in terms of analytical procedures to investigate geochemical parameters suitable to represent useful tool for medical purpose.

ORGANIZATIVE DETAILS

The Summer School is limited to only 15 participants. The Summer School is intended for PhD students and young scientists in Geochemistry, Medicine, Ecology, Biology with interest on Medical Geology issues, particular interest on the effect of toxicity of trace elements and geological materials on the human health. Further scope of the School is to provide the opportunity to induce stronger contacts and networks between researchers working in different areas of Geosciences, Environment and Human Health.

The participants will receive Certificates of Attendance

The inscription fees are 600 €. A pre-registration of 300 € will be delivered before July 31 2010 whereas the balance of 300 € will be paid before and not later september 15 2010.

Bank transfers will be delivered to an account that will be given in a following circular. A copy of bank transfer related to the pre-registration will be enclosed in the booking e-mail, as attachment, and sent to censi@unipa.it before July 31 2010. Applications will not be processed until the pre-registration fees are received.

The accommodation fee pays for a college room, two coffee break, lunch meals, and transfer from Palermo to Capo Granitola day-return. Evening meals are not included. Accommodation allocations are prevented at student houses in single-bed rooms and two-beds rooms at "Casa del Goliardo" and "Residence Schiavuzzo" located in the old fashionable historical Centre of Palermo.



LINKS

Prof. Paolo Censi
Dipartimento di Chimica e Fisica
della Terra
Via Archirafi, 36
90123 Palermo (ITALY)
e-mail: censi@unipa.it
tel.: +3909123861639
mobile: +393479662844
FAX: +390916169376.

Dr. Annalisa Alessi
IAMC-CNR UOS di Capo Granitola
e-mail: annalisa.alessi@iamc.cnr.it
tel.: +3909244061100
Fax: +39092340445