

Distinguished Lectures in Earth Sciences

Iterative methods for the inversion of nonlinear magnetic and gravitational fields

Harry B. Bingham

**Dept. of Civil & Mechanical Engineering
Technical University of Denmark**

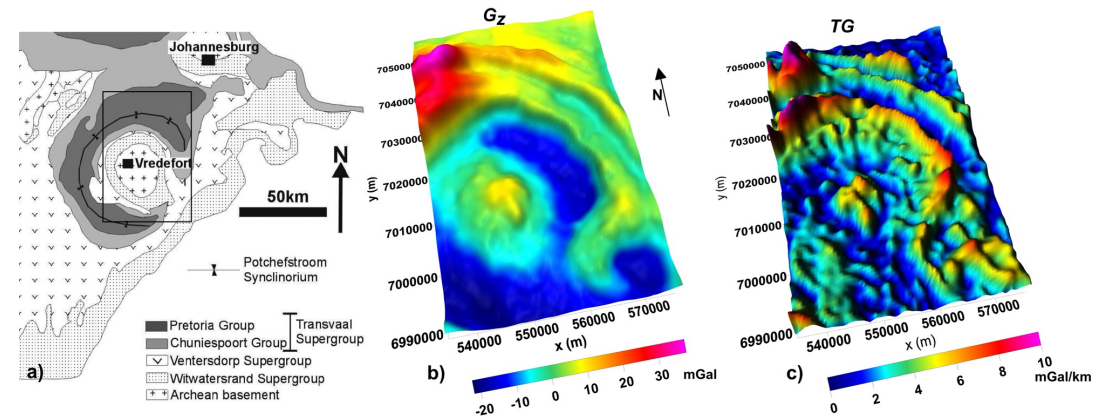
[https://us02web.zoom.us/j/81682192410?pwd=M2VtZzExYVZkR
ENpNENZSXIETG4xUT09](https://us02web.zoom.us/j/81682192410?pwd=M2VtZzExYVZkR
ENpNENZSXIETG4xUT09)

ID riunione: 816 8219 2410

Passcode: 824300



**Mercoledì 26 Ottobre ore 16:30
Aula Geo 3 – DiSTAR, Edificio 10
Complesso Universitario di Monte S. Angelo**



**UNIVERSITÀ DEGLI STUDI
DI NAPOLI FEDERICO II**