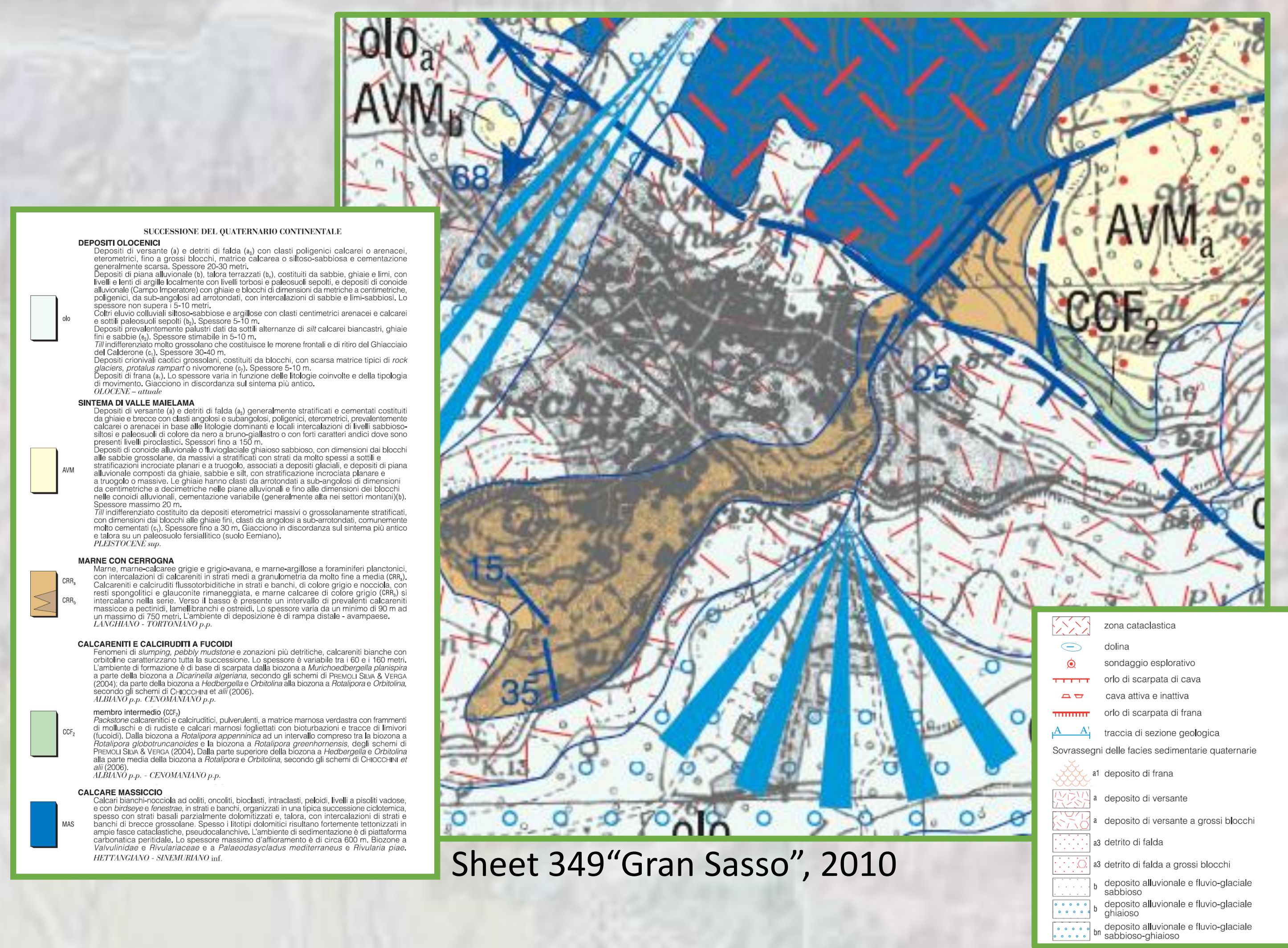
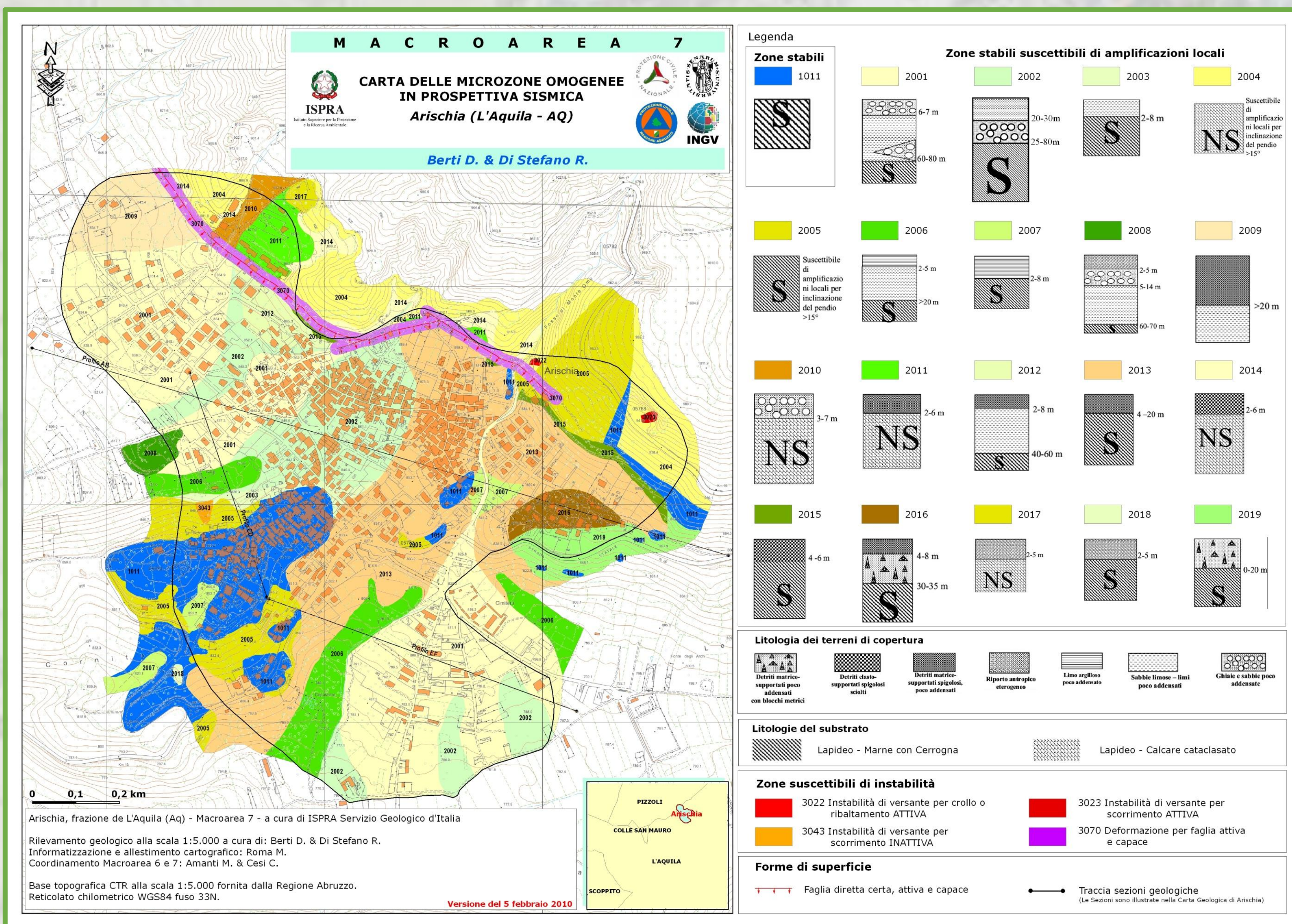
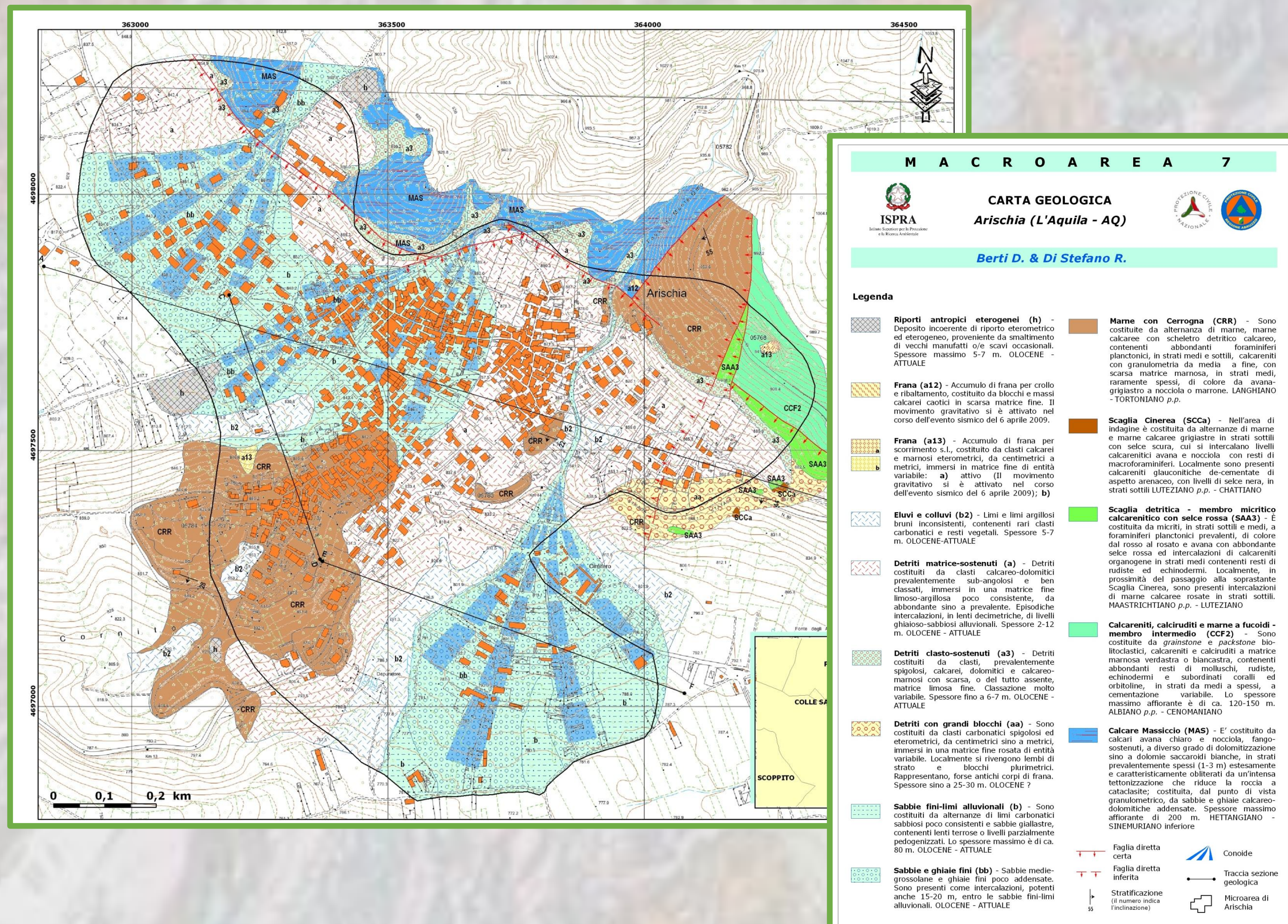


# Central Apennines: the Fucino and L'Aquila areas From the CARG project to seismic microzonation

Although having a different goal, a well-done field survey at 1:10,000 scale realized for the Geological Map of Italy at 1:50,000 scale (Sheet 349 “Gran Sasso”) turns out to be a basic starting point for the 1<sup>st</sup> level Seismic Microzonation (2010). Only few differences between the two maps below can be seen. Also, they arise from the different interpretation of some deposits rather than from a different mapping approach. The geological map (1:5,000) for seismic microzonation shows a more detailed description of the Quaternary deposits and maps a unit (Scaglia detritica) not reported in the CARG (1:50,000) map.



Sheet 349“Gran Sasso”, 2010



Additional thematic maps are derived from the geological maps to support the delimitation of areas with different susceptibility to seismic local amplifications. The knowledge of thickness and mechanical behavior of geological units is a prerequisite to distinguish zones with different susceptibility to seismic amplifications.

