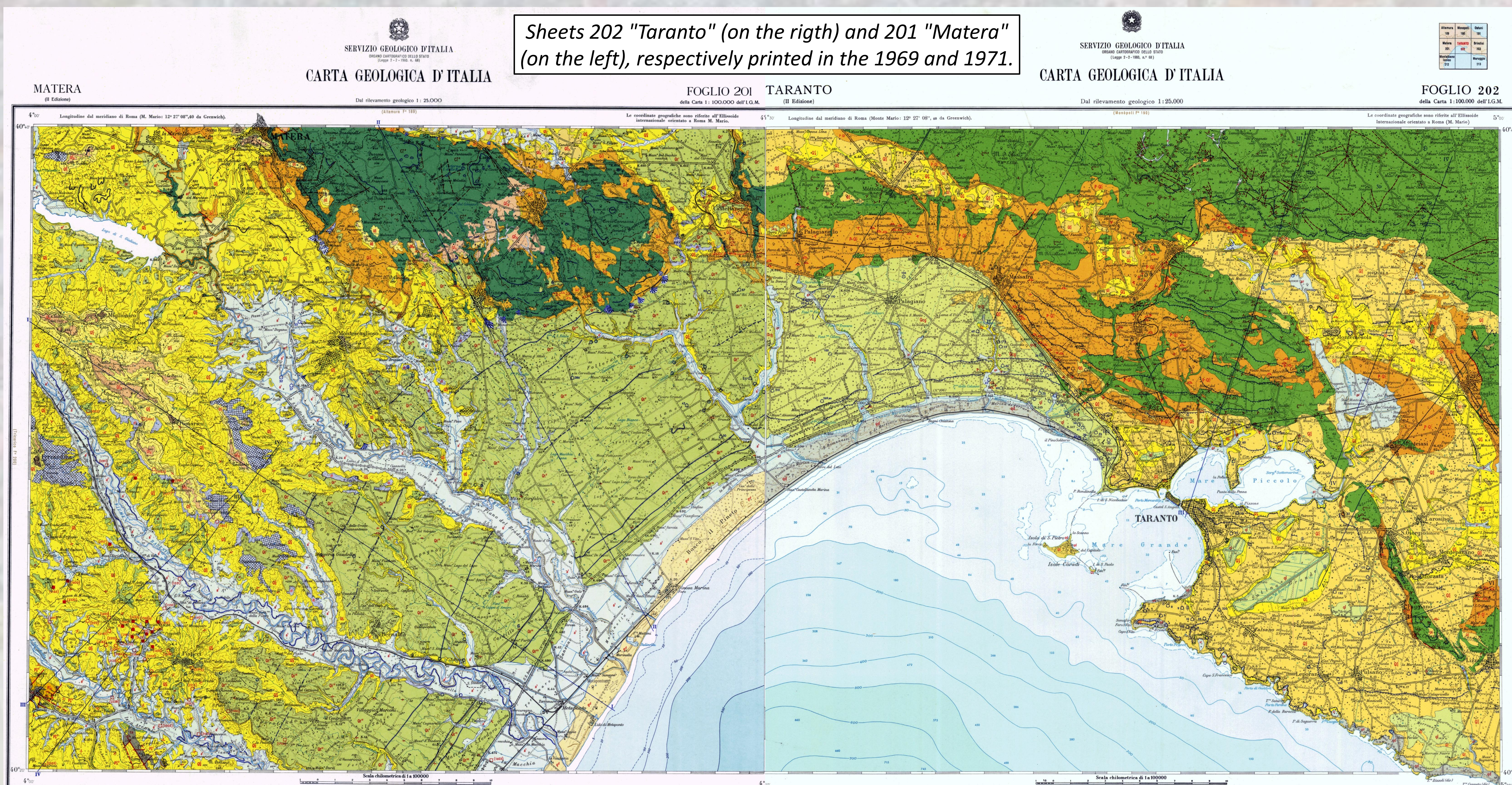




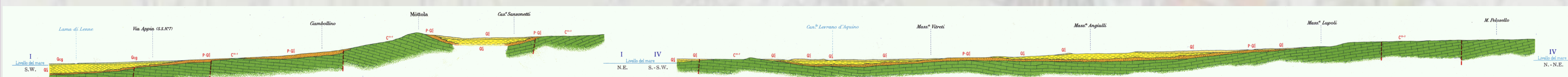
# Taranto

## The official geological maps

Sheets 202 "Taranto" (on the right) and 201 "Matera" (on the left), respectively printed in the 1969 and 1971.



All geological surveys made in the Murge area for the second edition of the 1:100,000 geological map of Italy were realized during the 60's. For the first time geological sections were proposed, showing the presence of normal faults governing the distribution of Plio-Pleistocene deposits along the western flank of Murge, like in the Taranto area.



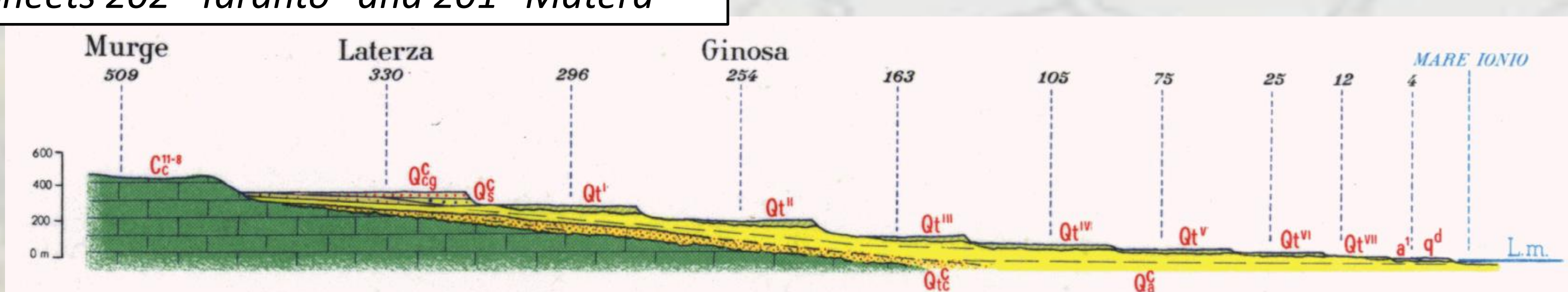
Cretaceous stratigraphy was much detailed, and a long history of litho- bio-stratigraphic studies on Cretaceous derived from geological efforts made to realize 1:100,000 maps of Murge. Moreover, a synthesis coming from the same maps suggested to attribute a geodynamic meaning to the Plio-Pleistocene succession cropping out in the Taranto area, that is now considered a stratigraphic record of the Apennines foredeep (the Bradanic Trough) on its foreland side.

Apennines

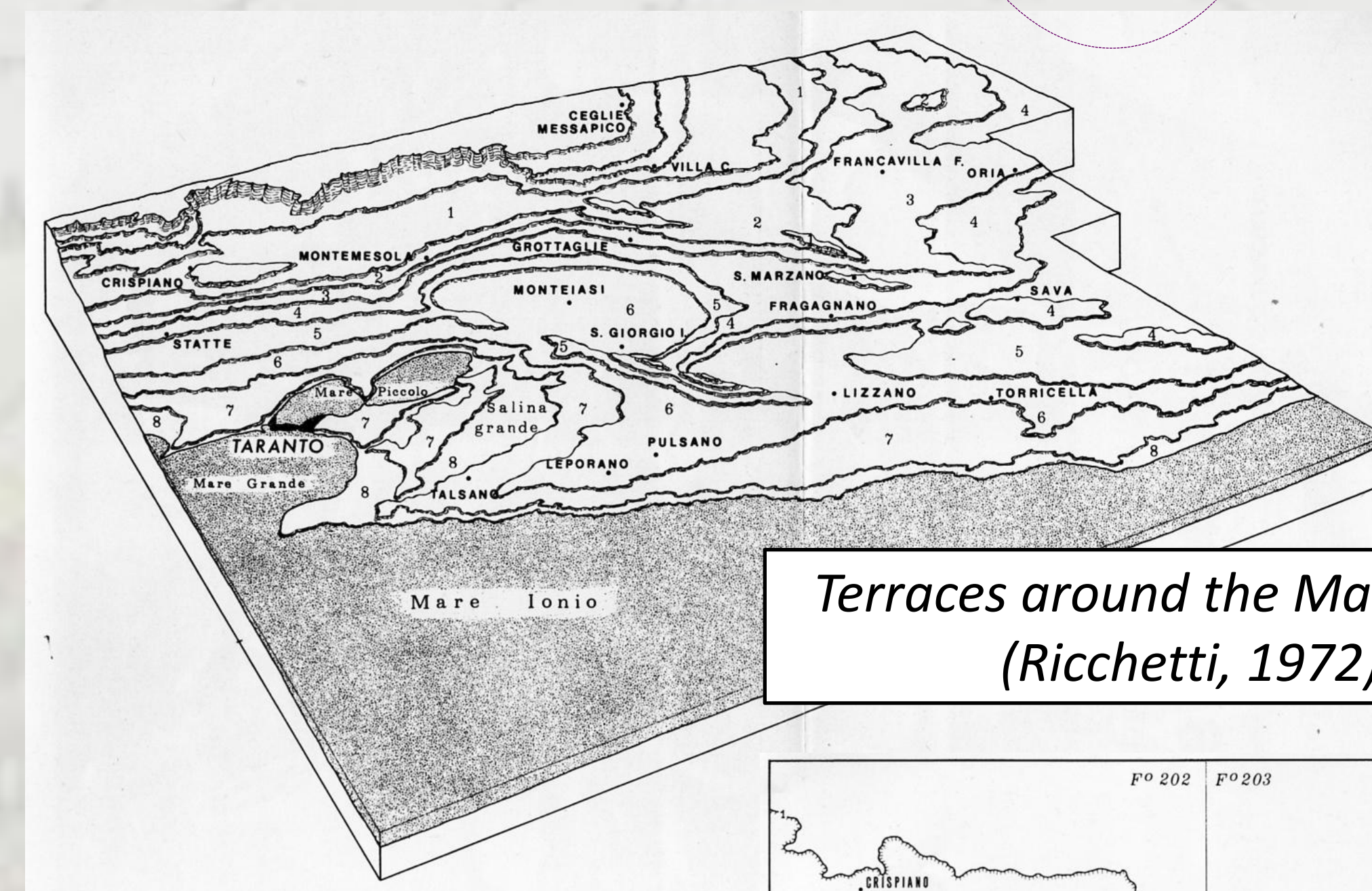
Bradanic Trough

Apulian Foreland

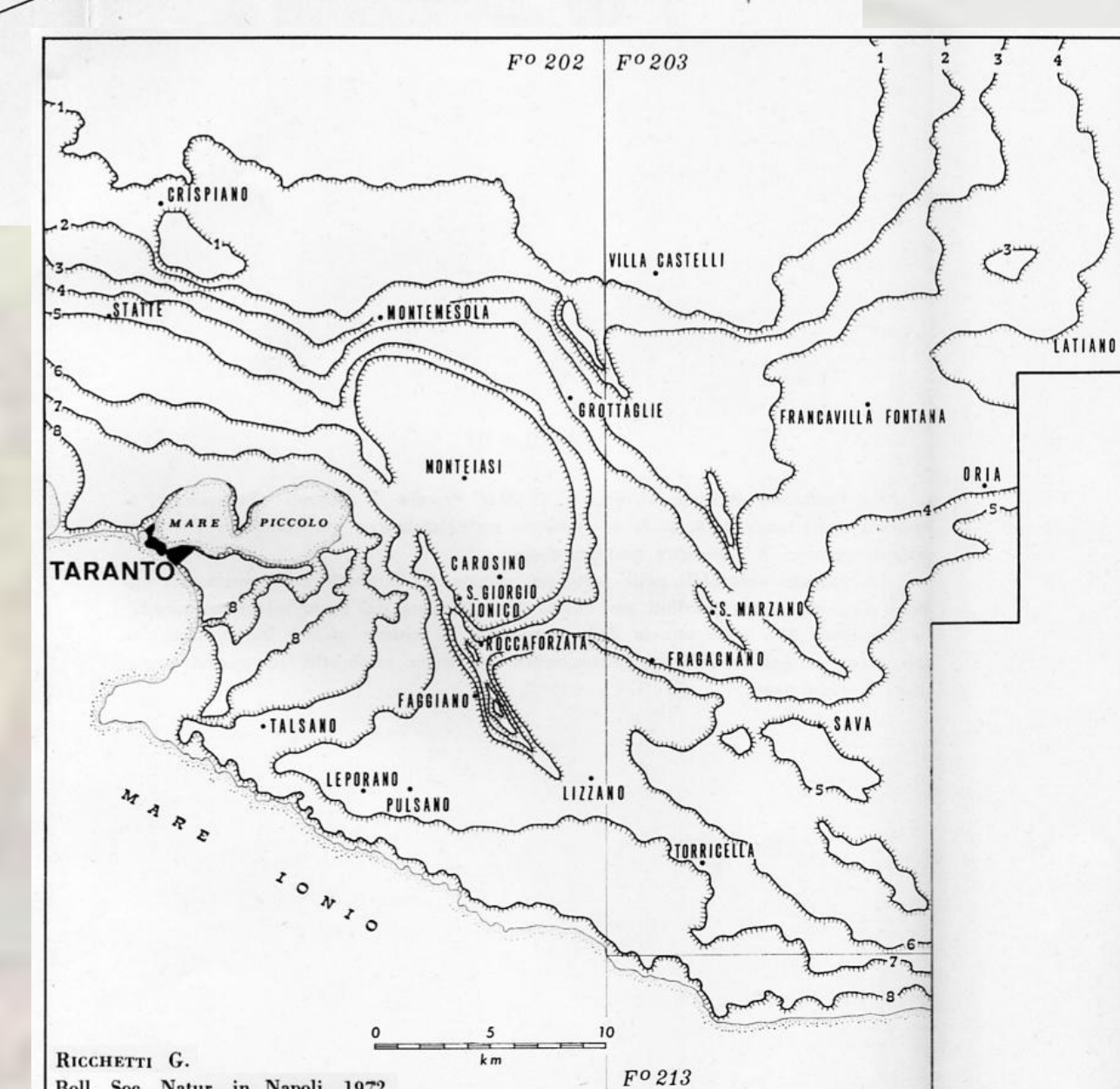
Geological section and sketches from the Sheets 202 "Taranto" and 201 "Matera"



A staircase of marine terraces characterizes the hinterland of the Taranto Gulf back to the Metaponto Coastal Plain. Terraces around the Mar Piccolo of Taranto were successively better represented by Ricchetti (1972).



Terraces around the Mar Piccolo (Ricchetti, 1972)



ERA	PERIOD	EPOCH & SUBEPOCH	AGE	AGE (Ma)	GSSP
CENOZOIC	QUATERNARY	HOLOCENE		0.012	
		PLEISTOCENE		0.126	
		PLIOCENE		2.588	
		ZANCLEAN		5.332	
CENOZOIC	QUATERNARY	HOLOCENE		0.012	
		PLEISTOCENE		0.126	
		PLIOCENE		2.588	
		ZANCLEAN		5.332	

Terraces in the hinterland of Taranto Gulf represent one of the best worldwide stratigraphic record of the Quaternary period. Within these terraces, those around the Mar Piccolo of Taranto represent the best record of the Late Pleistocene, and Tarantian is the name recently proposed for this interval of time. No Global Stratotype Section and Point (GSSP) have been still formally defined for this interval, but stratigraphic sections around Taranto and the Mar Piccolo are the best candidates to become the GSSP for the Tarantian stage.

International Commission on Stratigraphy – Subcommission on Quaternary Stratigraphy  
<http://quaternary.stratigraphy.org/definitions/pleistocenesubdivision/>

