

Distinguished Lectures in Earth Sciences

Architecture and dynamics of
magma plumbing system – a petro-
geochemical approach.

Helene Balcone-Boissard

Institut des Sciences de la Terre de Paris (ISTeP),
CNRS-Sorbonne Université, Paris, France

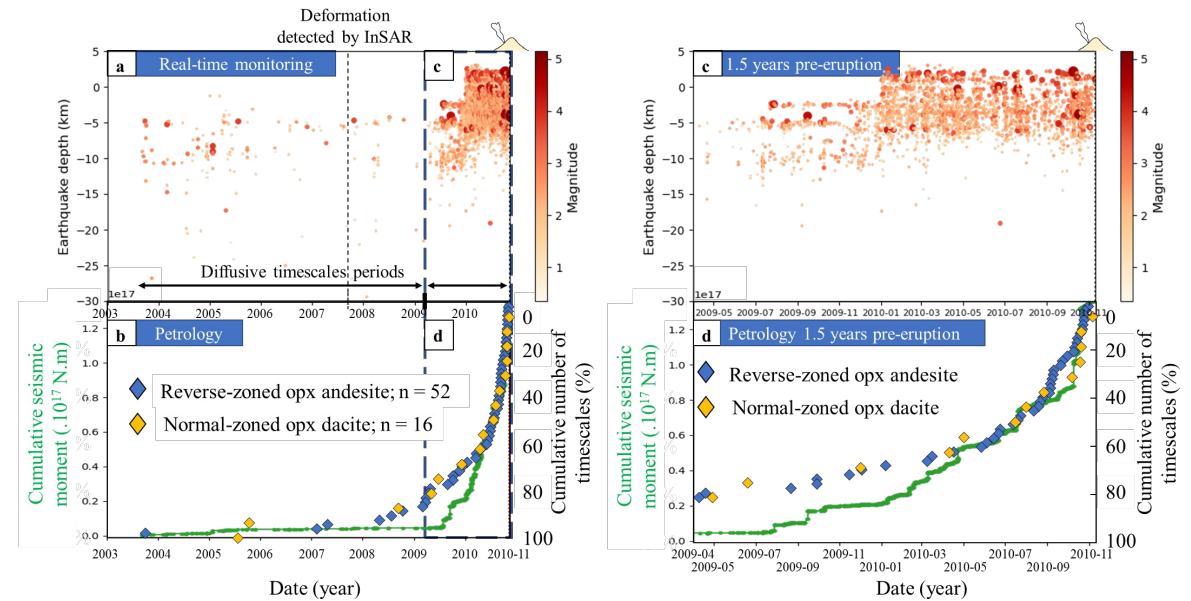
<https://us02web.zoom.us/j/89573488111?pwd=SFpwVTZEY0QvZTRiOEwvTXpXRvhtUT09>

ID riunione: 895 7348 8111

Passcode: 495013



Venerdì 14 Aprile ore 11:00
Aula Geo 3 – DiSTAR, Edificio 10
Complesso Universitario di Monte S. Angelo



Kizimen, 2010 eruption. Ostorero et al. (2022)



UNIVERSITÀ DEGLI STUDI
DI NAPOLI FEDERICO II