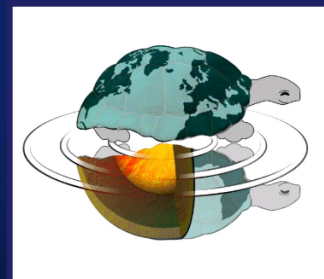


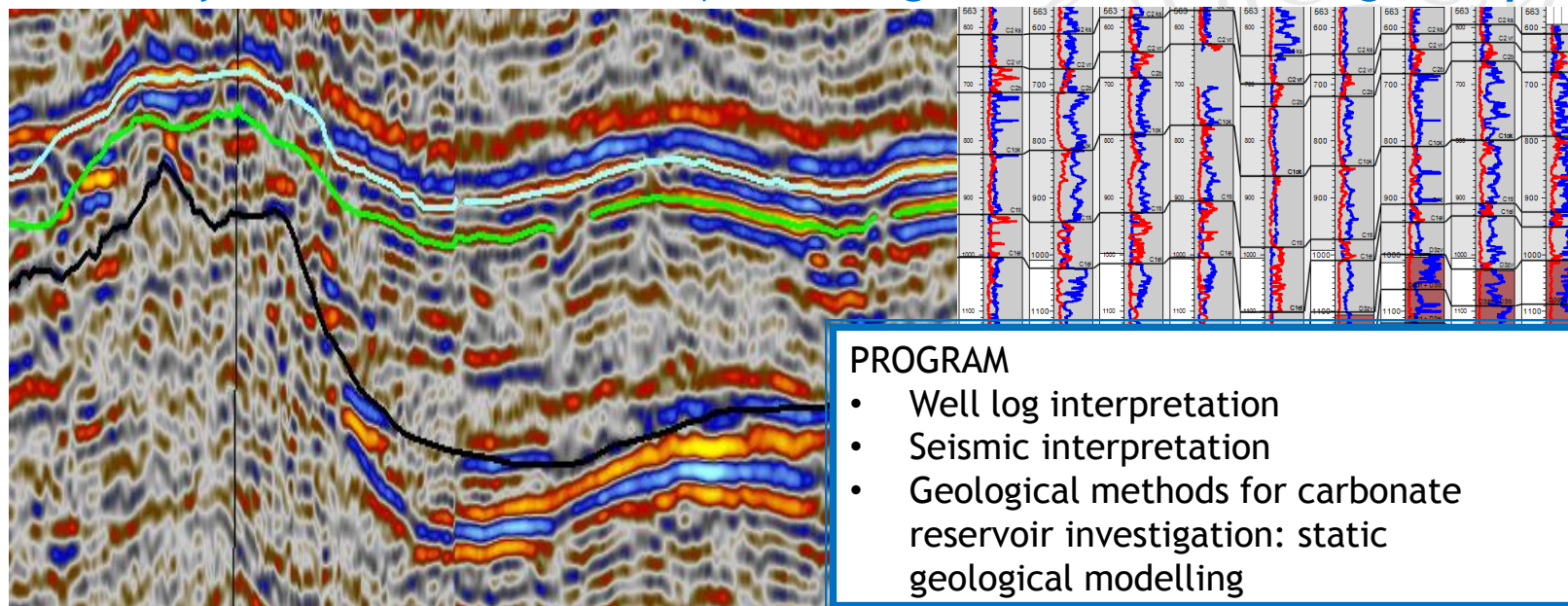


UNIVERSITÀ DEGLI STUDI DI MILANO

Corso di Dottorato in
Scienze della Terra
(PhD, Earth Sciences)



Milano - 7-9 Novembre 2017 - Short course (24 h; 4 cfu)
Seismic interpretation and static geological modelling in Petrel (Schlumberger)
of carbonate reservoirs, including seismic and well log interpretation



PROGRAM

- Well log interpretation
- Seismic interpretation
- Geological methods for carbonate reservoir investigation: static geological modelling



 Kazan Federal
UNIVERSITY
INSTITUTE
of Geology and Petroleum
Technologies

Dr. Boris Platov

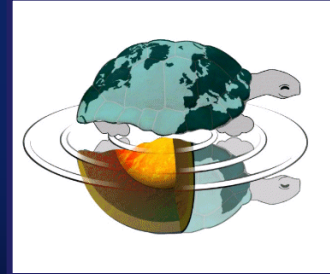
Institute of Geology and Petroleum Technologies
Kazan Federal University, Russian Federation

Per informazioni e iscrizione contattare:
DOCENTE DI RIFERIMENTO UNIMI (giovanna.dellaporta@unimi.it)



UNIVERSITÀ DEGLI STUDI DI MILANO

Corso di Dottorato in
Scienze della Terra
(PhD, Earth Sciences)



Seismic interpretation and static geological modelling in Petrel (Schlumberger) of carbonate reservoirs, including seismic and well log interpretation

Dr. Boris Platov

Day 1. Well log interpretation

- Physical basics of well logs. Resistivity, LLD, induction log, FMI, gamma ray, neutron
- Geological interpretation of well logs:
- Lithology
- Porosity
- Clay content
- Oil and gas saturation

Day 2. Seismic interpretation

- What is seismic and how to work with it?
- Standard seismic interpretation
- Seismic attributes
- Seismic inversion
- AVO analysis

Day 3. Geophysical methods of carbonate reservoir investigation

- Static geological modelling
- Carbonate platform structure
- Carbonate platform in seismic section (practice)

